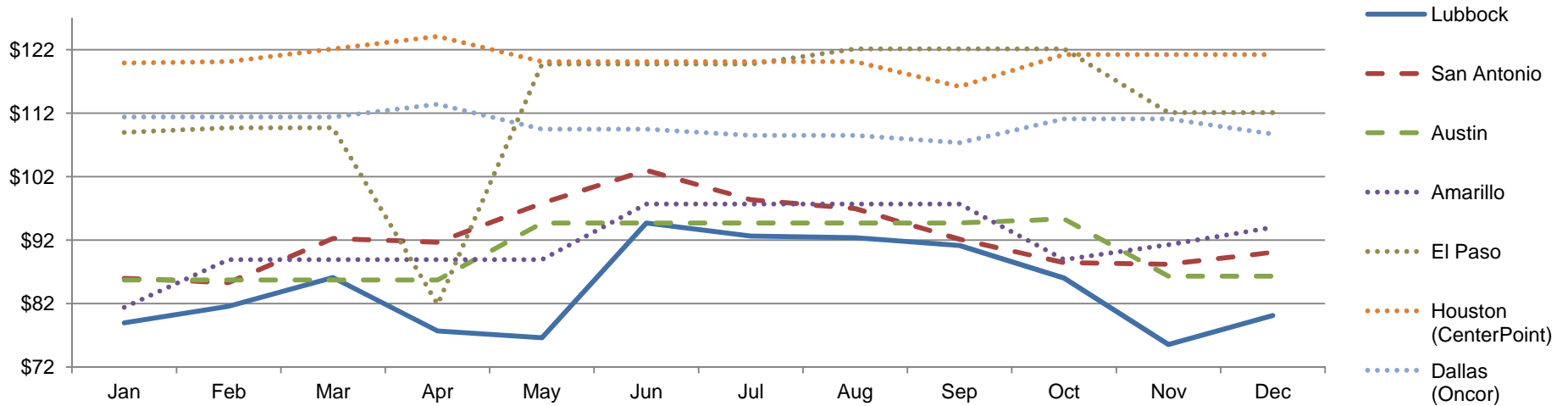




Lubbock Power & Light
The power is yours.

**Residential Home Bill Amounts
 Using 1000 kWh Around Texas
 (Excluding Taxes and Franchise Fees)**

		2011												Annual Average	
		Jan	Feb	Mar	Apr	May	Jun	Jul	Aug	Sep	Oct	Nov	Dec		
US Average		\$119.30	\$110.40	\$110.40	\$109.90	\$112.00	\$112.00	\$117.90	\$120.30	\$120.60	\$121.80	\$121.70	\$122.50	\$116.57	
Texas Average		\$93.21	\$93.53	\$93.09	\$90.87	\$101.03	\$102.51	\$102.12	\$102.54	\$99.76	\$96.89	\$90.68	\$96.76	\$96.92	
Municipally Owned Electric Companies	Lubbock	Lubbock Power & Light	\$78.97	\$81.58	\$86.13	\$77.67	\$76.63	\$94.70	\$92.65	\$92.40	\$91.15	\$86.04	\$75.56	\$80.12	\$84.47
	San Antonio	*City Public Service	\$85.97	\$85.28	\$92.25	\$91.67	\$97.81	\$103.00	\$98.40	\$96.95	\$92.14	\$88.47	\$88.20	\$90.07	\$92.52
	Austin	*Austin Energy	\$85.72	\$85.72	\$85.72	\$85.72	\$94.72	\$94.72	\$94.72	\$94.72	\$94.72	\$95.34	\$86.34	\$86.34	\$90.38
Investor Owned Electric Companies	Amarillo	*Xcel Energy (SPS Texas)	\$81.41	\$88.93	\$88.93	\$88.93	\$88.93	\$97.70	\$97.70	\$97.70	\$97.70	\$88.93	\$91.28	\$94.02	\$91.85
	El Paso	*El Paso Electric	\$108.96	\$109.72	\$109.72	\$81.89	\$119.76	\$119.76	\$119.76	\$122.15	\$122.15	\$122.15	\$112.11	\$112.11	\$113.35
	Houston (CenterPoint)	*TXU Energy (Texas Choice 12, e-Saver 12 Oct-)	\$119.94	\$120.13	\$122.13	\$124.13	\$120.13	\$120.13	\$120.13	\$120.13	\$116.21	\$121.26	\$121.26	\$121.26	\$120.57
	Dallas (Oncor)	*TXU Energy (Texas Choice 12, e-Saver 12 Oct-)	\$111.41	\$111.41	\$111.41	\$113.44	\$109.51	\$109.51	\$108.51	\$108.51	\$107.36	\$111.11	\$111.11	\$108.74	\$110.17



*Non-LP&L data from: <http://www.puc.state.tx.us/industry/electric/rates/RESbill.aspx>
<http://www.puc.state.tx.us/industry/electric/rates/NCrate.aspx>